

Fulflo® FB Filter Vessels

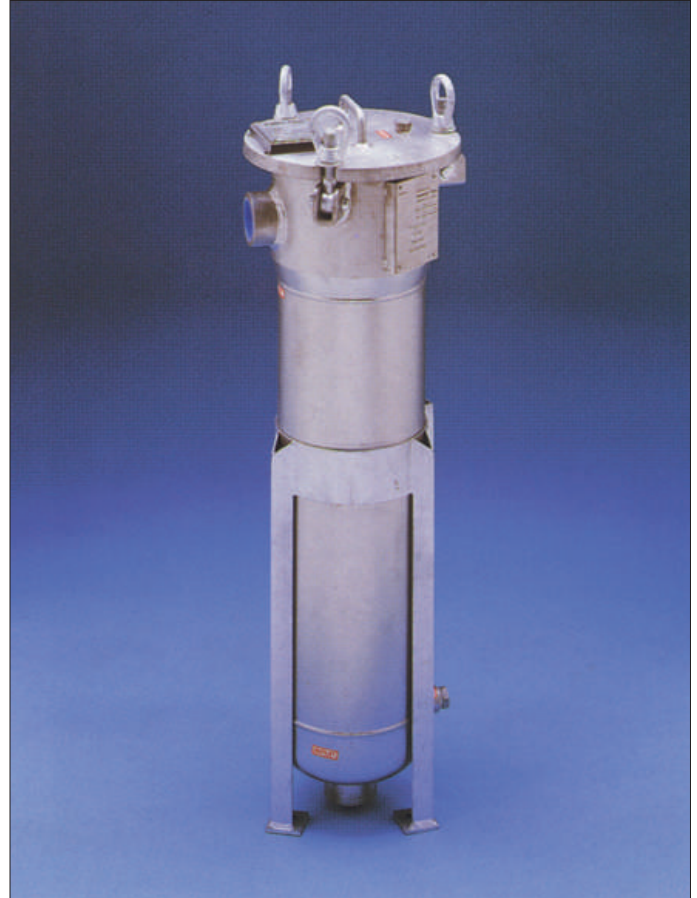
- Carbon Steel
- 304L and 316L Stainless Steel

Bag Filter Vessel Series

FB Model Bag Filter Vessels
Designed for Economical Filtration
of Liquids. PED compliance consult Parker

Applications

- Potable Water
- Process Water
- Edible Oils
- Coatings
- Lubricants
- Coolants
- Cutting Oils
- Solvents



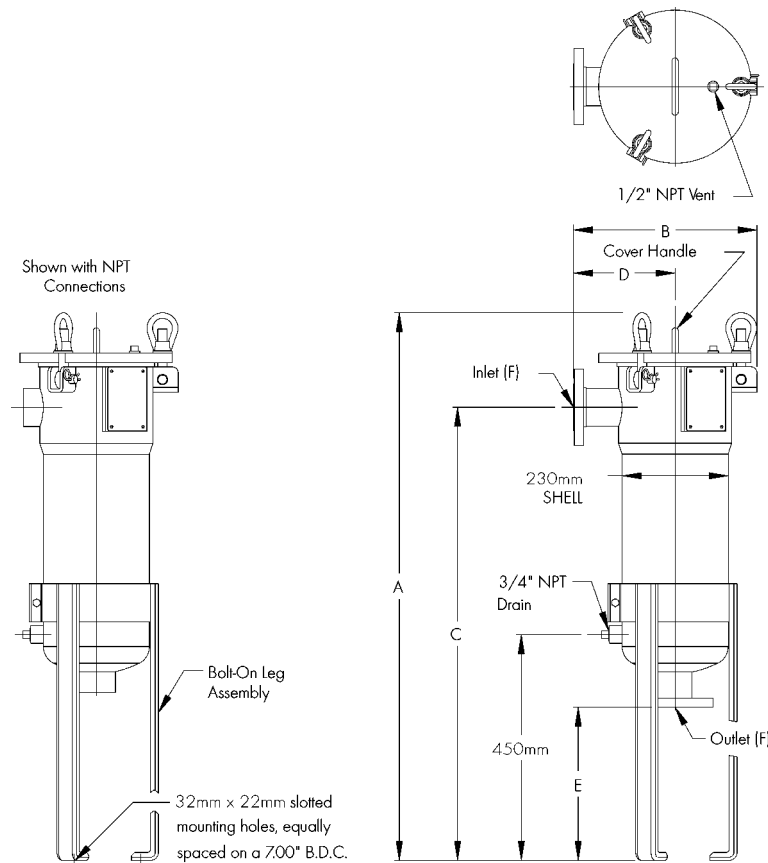
Design Features

- Single O-ring design closure assures quick, positive cover sealing. (O-rings are not required to seal filter bags.)
- Swing bolts with eyenuts for fast, easy opening and closing of cover.
- Buna-N O-ring standard with EPR, Viton* and Teflon* available.
- Maximum design pressure is 150 psi (10.3 bar) at 450°F** (232°C).
- ASME Code UM stamp is standard (U stamp is optional).
- Threaded vent and drain connections.
- Adjustable leg height. Threaded or flanged inlet and outlet.
- Side inlet; cover opens without disconnecting piping.
- Side inlet, bottom outlet and crevice-free welded design provide a smooth interior for easy wash-out and cleaning.
- Hinged cover for easy opening.
- Positive seal of bags prior to closing the vessel cover.
- Optional hold-down assembly for conversion to “G” style bag media for basket seal available.

Process Filtration Division

WARNING! FAILURE OR IMPROPER SELECTION OR IMPROPER USE OF THE PRODUCTS AND/OR SYSTEMS DESCRIBED HEREIN OR RELATED ITEMS CAN CAUSE DEATH, PERSONAL INJURY AND PROPERTY DAMAGE.
This document and other information from Parker Hannifin Corporation, its subsidiaries and authorised distributors provide product and/or system options for further investigation by users having technical expertise. It is important that you analyse all aspects of your application and review the information concerning the product or system in the current product catalogue. Due to the variety of operating conditions and applications for these products or systems, the user, through its own analysis and testing, is solely responsible for making the final selection for the products and systems and assuring that all performance, safety and warning requirements of the application are met. The products described herein, including without limitation, product features, specifications, designs, availability and pricing, are subject to change by Parker Hannifin Corporation and its subsidiaries at any time without notice.

Bag Filter Vessel Series



Design Specifications

Model	Bag Style	Typical Aqueous Flow _† (l/min)	Dimensions (in)						Shipping Weight (Kg)	Volume (litres)
			A	B	C	D	E	F		
FB11-2	Single	303	1100	310	910	146	335	2 NPT	41	20
FB11-2F	Single	303	1100	370	910	203	305	2 NPS	45	20
FB12-2	Double	606	1370	310	1180	146	335	2 NPT	43	30
FB12-2F	Double	606	1370	370	1180	203	305	2 NPS	48	30
FB12-3F	Double	606	1370	370	1180	203	300	3 NPS	52	30

† Actual flow rate is dependent on fluid viscosity, micron rating, contaminant and media type. Consult flow charts for each application.

Ordering Information

4L	FB	11	—	2F
Material	Model	Media Requirement		Inlet/Outlet Flange Size
No Symbol = Carbon Steel		11 = One Single Bag		2
4L = 304L Stainless Steel		12 = One Double Bag		3
6L = 316L Stainless Steel				No F = NPT

Process Filtration Division

* A trademark of E. I. du Pont de Nemours & Co.

** Operating temperature limited to 250°F (121°C) by standard Buna-N O-ring and exterior paint on carbon steel models. Optional O-ring materials are available.

Parker Filtration
 Filter Division Europe
 Shaw Cross Business Park
 Dewsbury, West Yorkshire
 WF12 7RD, England
 Phone: +44 (0) 1924 487000
 Fax: +44 (0) 1924 487001
 Website: www.parker.com

